

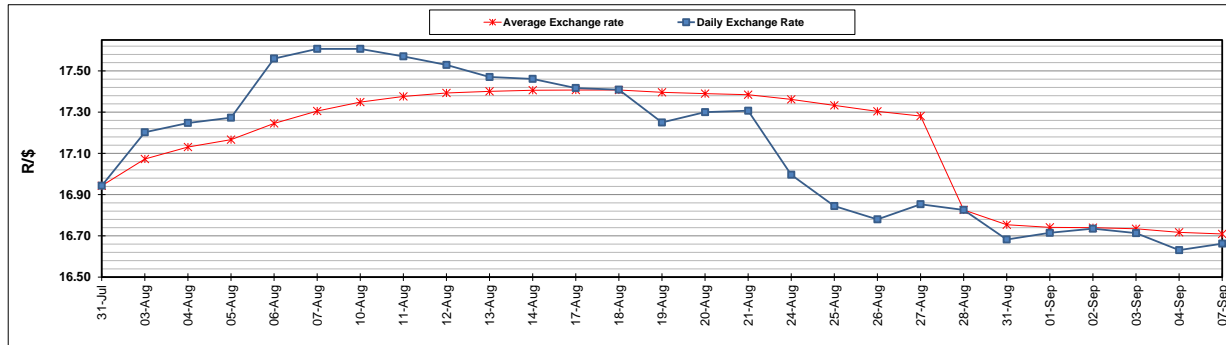
	PETROL 95 ULP	PETROL 93 ULP & LRP	DIESEL 0.05%	DIESEL 0.005%	ILL. PAR.
GAUTENG PUMP PRICE (SA c/l) AS FROM 02/09/2020	1,518.000	1,489.000	-	-	-
WHOLESALE PRICE (SA c/l) AS FROM 02/09/2020	-	-	1,327.560	1,331.960	716.828
SINGLE NATIONAL MAXIMUM RETAIL PRICE	-	-	-	-	899.000
BASIC FUEL PRICE - 07/09/2020 (SA c/l)	526.278	515.344	483.521	485.553	421.192
PRESS RELEASE CONTRIBUTION TO BFP 02/09/2020 - 07/09/2020 (SA c/l)	565.470	546.470	576.630	581.030	512.128
UNIT OVER/(UNDER) RECOVERY - 07/09/2020 (SA c/l)	39.192	31.126	93.109	95.477	90.936
AVERAGE BASIC FUEL PRICE 28/08/2020 - 07/09/2020	543.855	535.665	516.720	519.114	452.310
AVERAGE UNIT OVER/(UNDER) RECOVERY 28/08/2020 - 07/09/2020	23.457	12.647	68.910	70.916	70.961

### ANALYSIS MOVEMENT OF AVERAGE OVER/(UNDER) RECOVERY

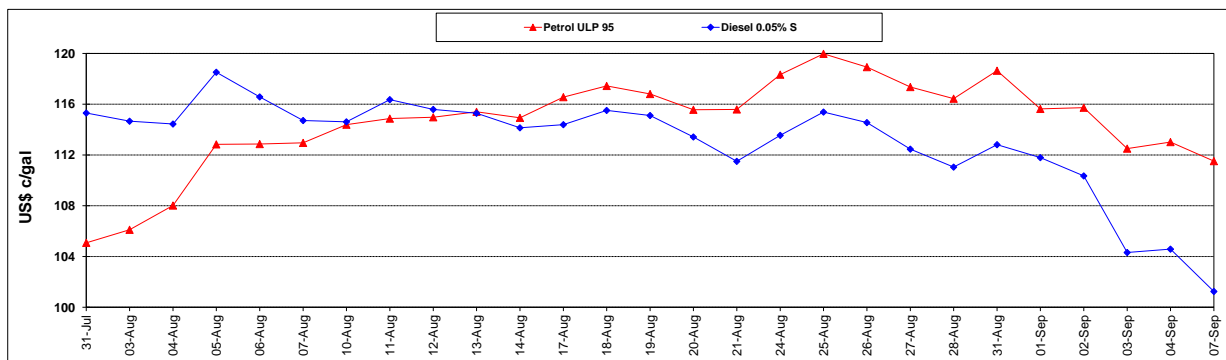
	PETROL 95	PETROL 93	DIESEL 0.05%	DIESEL 0.005%	ILL. PAR.
- MOVEMENT IN INTERNATIONAL PRODUCT PRICES	4.837	(5.692)	51.218	53.142	55.475
- MOVEMENT IN EXCHANGE RATE	18.621	18.340	17.692	17.774	15.486
AVERAGE UNIT OVER/(UNDER) RECOVERY 28/08/2020 - 07/09/2020	23.457	12.647	68.910	70.916	70.961

### R/\$ EXCHANGE RATE - (R/\$16.6625 - 07/09/2020)

#### EXCHANGE RATE USED IN BASIC FUEL PRICE



#### INTERNATIONAL PRODUCT PRICES OF BASKET USED IN BASIC FUEL PRICE



#### BASIC FUEL PRICE IN SA CENTS PER LITRE

